



CHAPUIS ARMES  
FRANCE



# Catalogue

2022 / 2023



[chapis-armes.com](https://chapis-armes.com)





# THE ART OF CRAFTSMANSHIP



OVER  
A CENTURY



A UNIQUE ENGRAVING  
EXPERTISE



ENTREPRISE DU  
PATRIMOINE VIVANT



100% MADE  
IN FRANCE

Heirs of a know-how learned from our ancestors, gun-makers in the region of Saint Etienne ever since the early years of the XX century, we made permanent endeavors to preserve and enhance this century-old craft, while not overlooking the technical possibilities offered nowadays by the new technologies and the most modern machineries. Our belonging to the Beretta Group, which took a major part of our capital, is by itself a symbol of the acknowledgment of our company as one of the great trademarks among gun makers. Now widely distributed on the main international markets, thanks to the sales network of this group, we are involved in developing a technical process to face tomorrow's challenges.

Permanently concerned to have our array of guns and rifles meeting the demands of our customers, we propose this year a major evolution of our iconic gun, the "Super Orion", a dream turned to reality with its version chambered in .410 Magnum caliber.

Our now well-known array of straight-pull rifles is enriched with the new "Pro Hunter" model. We urge you to discover this new catalog, with its distinctive "French touch" offering guns and rifles made for today and for the future.

Vincent Chapuis

## LEGEND



Over  
& under  
double rifle



Side by side  
double rifle



Over under  
shotgun



Side by side  
shotgun

 **CHAPUIS ARMES**  
FRANCE

## CONTENTS

<b>ROLS RANGE</b> .....	4
Technicals Features.....	6
Pro Hunter .....	7
Classic.....	8 - 9
Performance.....	10 - 11
Elegance.....	12 - 13
Deluxe.....	14 - 15
Artisan.....	16 - 17
Carbon.....	18
Technical data sheet.....	19

<b>CLASSIC COLLECTION WITH ROUND ACTION</b> .....	20
Over & under Express rifle with adjustable convergence of the barrels.....	22 - 23
Super Orion over & under Express rifles.....	24 - 25
Side by side Express rifle with adjustable convergence of the barrels .....	26 - 27
Progress side-by-side Express rifles.....	28 - 29
Super Orion Over & under light weight shotgun .....	30 - 31
Super Orion over & under shotguns .....	32 - 33
Progress side-by-side Progress Round Design.....	34 - 35
Over & under Super Orion .410 Gauge.....	36 - 37
Super Orion shotguns and Progress side-by-side .....	38 - 39

<b>ARTISAN COLLECTION WITH ROUND ACTION</b> .....	40
Over & under Super Orion.....	42 - 43
Progress side-by-side shotguns.....	44 - 45
Side by side Serie 3 Express rifle.....	46 - 47
Super Orion Serie 3 Express rifle .....	48 - 49

<b>GRAND LUXE COLLECTION</b> .....	50
Super Orion over & under shotguns and Progress side-by-side shotguns .....	52 - 53
Progress Express rifles and Super Orion Express rifles.....	54 - 55
African Express rifles.....	56 - 57
The Art of hand engraving .....	58 - 59



# Rols range

STRAIGHT PULL ACTION RIFLE

Imagined, designed, engineered and entirely manufactured in our workshop in Saint Bonnet le Château, the new straight pull rifle ROLS is the result of the passion and knowhow of the engineers and technicians from Chapuis Armes.

Despite our great expertise in rifles, no less than 6 years were needed to perfect, realize, test and put the final touch on this new rifle with its entirely new straight pull bolt action based on a 100% new mechanism. Protected by several patents, this new ROLS rifle has undergone many field tests, and immediately after its presentation in March 2017, the press specialized on arms and hunting unanimously cheered the new ROLS because of its technical performance and its perfect ergonomics.





The new range of our straight pull action rifle

## PASSION - INNOVATION - ACCURACY



### Innovative CLS locking system.

The new and patented "Chapuis Locking System" is of unmatched strength thanks to its bearing surface of 260 mm<sup>2</sup>.

### Notches for scope mounts.

For greater precision, the mounts lock directly on the barrel itself.

### Independent cocking system.

The design of the cocking/decoking device, its specific, carefully thought shape are meant for an easy use.

### Switch barrels.

Secured on a high strength steel insert, the high precision barrels are assembled by means of a screw under the barrel.

### Detachable magazine.

New rotary detachable magazine.

### No unwanted discharge.

A new and patented internal safety device allows firing only when the bolt is completely locked.

chapis-armes.com

## Rols Pro Hunter

Whether you were seeking trophies of alpine big game which will lure you in steep mountain country or whether you were tracking a pack of boars tucked in dense thicket, you will expect the same qualities from your rifle. You are to be confident on a rifle which is reliable, accurate, compact and resisting adverse conditions. It is for you, hunters of demanding hunts, or professional hunters, that we created this very new "Pro Hunter" version.



## Rols range

STRAIGHT PULL ACTION RIFLE

NEW

### Rols Pro Hunter

Based on a technical and ecological solution with a plastic-free stock our "Pro Hunter" version features a new material: "Techno Wood", made of compressed, recyclable wood fibers produced by a FSC certified industry. It has a new stock design, with ideal ergonomics and a better grip. A new coating will provide the stock with a long-lasting protection against scratches.

**Features:** New one-piece stock made of "Techno Wood" Action made of Fortal 7075 alloy inserted into the stock. Available in standard calibers: .30-06 and .300 Winchester Magnum Weight: Circa 3 kgs. (6 Lbs)





# Rols Classic

Intended to be the extension of your own arm, this new rifle will be suited for any types of hunts, be it driven, walk and stalk, from a hide, in the mountains. Thanks to its modular conception, it will suit any terrain.

Offered in a version without ornaments, this model has a classic style, typical of quality gun makers, with a beautiful walnut stock, sanded and oiled, bronze or black colored action.



## Rols Classic Bronze or Black

**Features:** Solid receiver machined from a Fortal 7075 alloy billet anodized, bronze or black on request. Pistol grip 3 stars grade stock, sanded, oil finished, with Monte-Carlo hump, tulip-shaped fore-end tip. Recoil pad. Bolt lever with black, round handle. Detachable, rotary magazine box. Switch barrels. Opens sights with height-adjustable front bead, patented luminescent, triangle shaped rear sight. On request, barrels are available without open sights. Sling swivels.

See calibers page 19.





# Rols Performance

New one piece stock for right-handed hunters. The ergonomics of its grip reduces the tensions in the hand holding the rifle. The perfect ergonomics of the stock will relax the shooter, enhancing stability, allowing a perfect control of the shot. The optimal design of the thumbhole allows a very fast repositioning of the hand between each shot,

without losing the line of sight, thus allowing quick reloads in a driven hunt. The finger rests on the front of the grip and the thumb rest on the left side of the stock allow a comfortable handling of the rifle. The natural material of the stock: « Technosoft », is highly resistant, has a synthetic « Soft Touch » coating for a better hold, whatever the weather conditions.



## Rols Performance

**Technical features:** Receiver made of Fortal 7075 alloy, inserted into the stock. Onepiece stock with thumbhole, made of a natural material : « Technosoft ». Recoil pad. Lever with black synthetic handle. Rotating magazine. Interchangeable barrel. Barrel with triangle-shaped, patented luminescent open (iron) rear sight, adjustable front sight. On request, the barrel can be sold without open (iron) sights. Swivel studs and sling swivels.

See calibers page 19.



## ROLS Wood Performance

**Features:** New one-piece stock with thumbhole for right-handed person, made of grade 3 walnut, sanded and oiled. New patented take-down grip cap, with an integrated multi-purpose tool housed in the pistol grip. Action made of 7075 Fortal alloy inserted into the stock. New "Rapid" swivel studs with sling swivels.

See calibers page 19.





# Rols Elegance

"Traditional" is the word that comes to one's mind when looking at this rifle. The objective of this new model is to maintain the technical, mechanical qualities of our new straight pull bolt rifle, while offering a new version blessed with the aesthetic codes of the classic rifles. The receiver machined from a Fortal 7075 alloy billet is inserted in a one-

piece rounded stock, a feature of the "Chapuis" rifles. This modern rifle incredibly light is easy to aim. Thanks to its flush action, quick, follow-on shots can be fired. It is perfectly suited for driven hunts. Switch barrels allow the hunter to face any hunting situation in any of the five continents, year round.

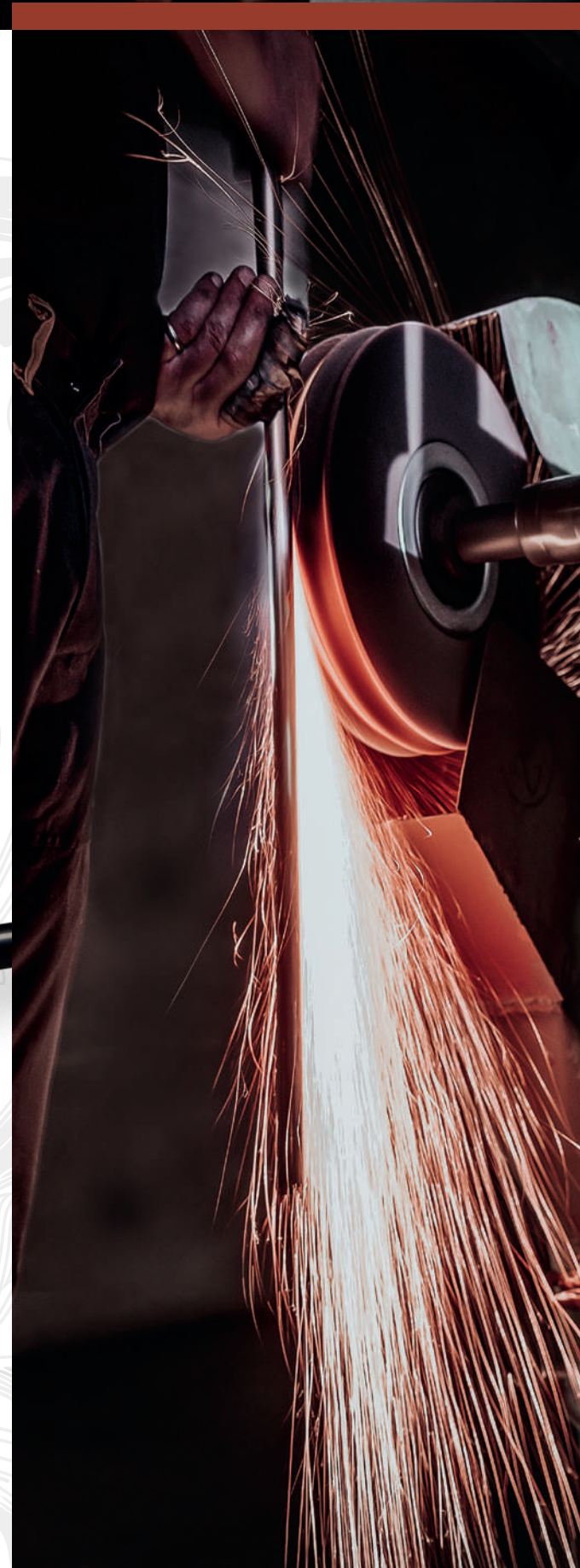


## Rols Elegance

**Features:** Receiver machined from a Fortal 7075 alloy billet, inserted in the stock. Pistol grip stock made of Grade 3 walnut, sanded and oil finished. Recoil pad. Bolt lever with walnut round handle. Rotary, detachable magazine. Switch barrels. Open sights with height-adjustable front bead, patented luminescent, triangle shaped rear sight. On request, barrels are available without open sights. On option: New take-down pistol grip cap with its multi-purpose tool. Detachable Sling swivels.

## Rols range

STRAIGHT PULL ACTION RIFLE

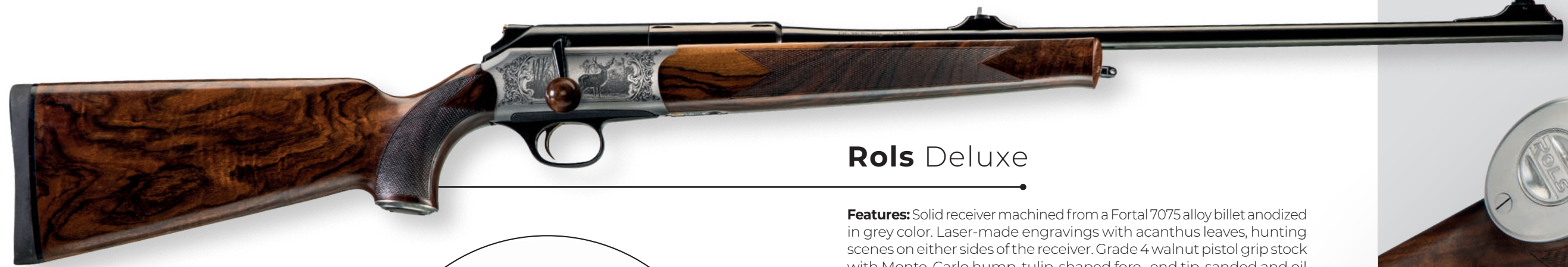




# Rols Deluxe

Presented with a higher degree of finish, this model will please the most demanding hunters. On the sides of the receiver the finest and most elegant engravings drawn by one of our masters engravers are to be found, showing hunting scenes

of a stunning realism. They offer elegant, selected, grade 4 walnut stocks. The stock and fore end are sanded and oil finished, so as to show the exceptional patterns of these century old wood pieces.



## Rols Deluxe

**Features:** Solid receiver machined from a Fortal 7075 alloy billet anodized in grey color. Laser-made engravings with acanthus leaves, hunting scenes on either sides of the receiver. Grade 4 walnut pistol grip stock with Monte-Carlo hump, tulip-shaped fore-end tip, sanded and oil finished. New take-down pistol grip cap with its multi-purpose tool. Recoil pad. Bolt lever with walnut round handle. Rotary, detachable magazine box. Opens sights with height-adjustable front bead, patented luminescent, triangle shaped rear sight. On request, barrels are available without open sights. Detachable sling swivels.

See calibers page 19.



After the first feedbacks from our customers concerning our ROLS rifle, it appeared important to us to give them a handy means to disassemble the rifle without having to look for a tool. This new multi-purpose tool has been conceived to give you full autonomy for assembling and disassembling your ROLS rifle. Our engineers were able to house it into the pistol grip, integrated to an elegant take-down pistol grip cap. The barrel as well as the bolt can be changed with it. This cap and its integrated tool have been patented.

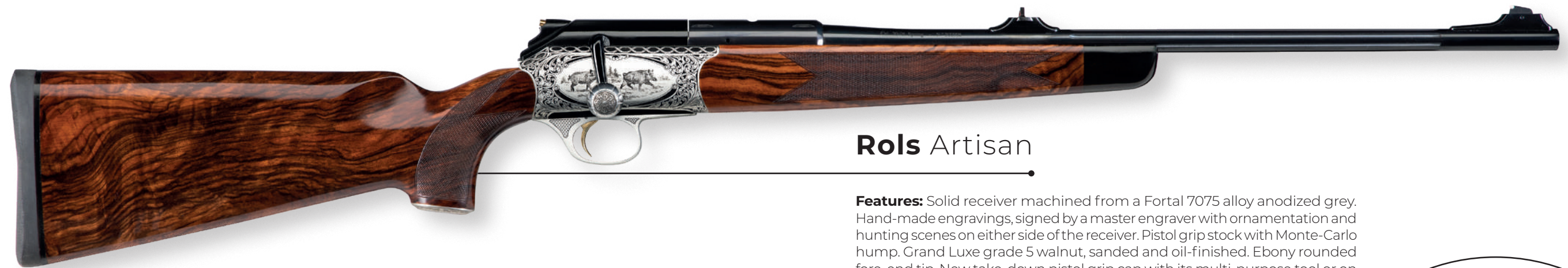




# Rols Artisan

This version is the true flagship of our range. It is certainly the most perfected version, which displays the best and age-old experience and craftsmanship of the best gunsmiths from our workshop, as well as the most recent technologies. This rifle is a first rate

model, just as all guns coming out of the "Chapuis Armes Custom Shop ". Customization is only limited by your imagination. Beautiful hand-made engravings, signed by our best master engravers, can be ordered at will and within your budget.



## Rols Artisan

**Features:** Solid receiver machined from a Fortal 7075 alloy anodized grey. Hand-made engravings, signed by a master engraver with ornamentation and hunting scenes on either side of the receiver. Pistol grip stock with Monte-Carlo hump. Grand Luxe grade 5 walnut, sanded and oil-finished. Ebony rounded fore-end tip. New take-down pistol grip cap with its multi-purpose tool or on demand skeleton grip cap. Recoil pad. Alloy bolt lever with checkered handle, "old silver" color (black on request) Detachable, rotary magazine box. Fluted and switch barrels. Opens sights with height-adjustable front bead, patented luminescent, triangle shaped rear sight. On request, fluted barrels are available without open sights. Detachable sling swivels. Delivered ABS Chapuis Armes Prestige gun case.

See calibers page 19.



## Rols range

STRAIGHT PULL ACTION RIFLE





Rols range  
STRAIGHT PULL ACTION RIFLE

# ROLS rifle. Carbon fibre stock.

Engineered and manufactured in cooperation with FTB, an Austrian company specialized on carbon fibre stocks, this new ROLS bears all the known advantages of the model. It is today the lightest straight-pull rifle on the market. This new

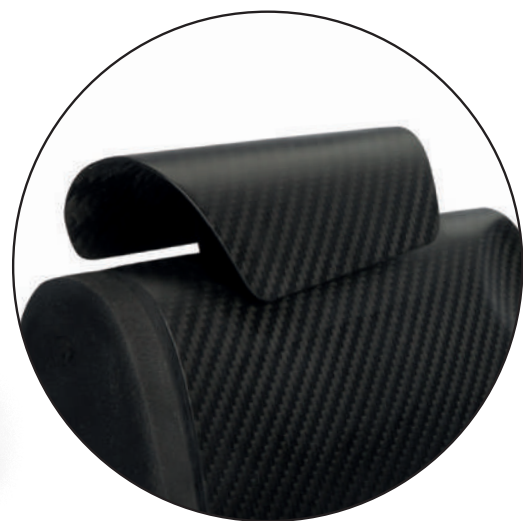
version has a perfect balance, a height adjustable comb, new "Rapid" sling swivels. It perfectly meets the expectations of mountain game hunters in terms of lightness and exclusive design.



## Rols rifle. Carbon fibre stock.

**Features:** New stock for right-handed person, entirely made of carbon fiber. Adjustable comb, by means of a press-release stud in the stock. Action made of 7075 Fortal alloy integrated into the stock. Fluted, threaded M14 barrel without iron sights. New "Rapid" sling studs and swivels.

See calibers page 19.



## TECHNICAL DATA SHEET

Available calibers for all models, matching magazines and type of bolts.

Caliber	Type of magazine	Magazine capacity	Type of bolt	Barrel length	Weight
6,5x55SE	6,5	4+1	Standard	600 mm	3 kg
6,5 Creedmoor	Mini	4+1	Standard	600 mm	3 kg
308Win	Mini	4+1	Standard	600 mm	3 kg
243Win	243	4+1	Standard	600 mm	3 kg
30.06	Standard	4+1	Standard	600 mm	3 kg
7x64	Standard	4+1	Standard	600 mm	3 kg
270Win	Standard	4+1	Standard	600 mm	3 kg
9,3x62	9.3	3+1	Standard	600 mm	3 kg
300Win Mag	Magnum	3+1	Magnum	630 mm	3,1 kg
7Rem Mag	Magnum	3+1	Magnum	630 mm	3,1 kg
375 H&H	375	3+1	Magnum	650 mm	3,3 kg



# Classic Collection

WITH ROUND ACTION

**Chapuis Armes offers many options for every gun, such as a single:**

- non-selective trigger unit

**On all Express rifles, the customer may opt for:**

- Pivot scope mounts and rings
- German claw-type scope mounts for rail-fitted scopes
- Additional smoothbore barrel kits in either 20 ga. or 28 ga., barrel length and chokes per customer request.





# Over & under Express rifle with adjustable convergence of the barrels

Over & under Express rifle with a free floating barrel design and a mechanical system to adjust the convergence of the barrels. The Soul of these new express rifles obviously resides in the hidden barrel regulating system. Whether you fire four, six or eight rounds cartridges in a quick succession or

just send one or two bullets on their way to your game, convergence and regulation stay assured in most hunting situations and with most quality cartridges. With this new over & under double rifle the regulation adjustment block is not visible.



New

## Super Orion

**Super Orion "double rifle. Limited series, Special driven hunt" with extractors.**

Calibers: 8x 57 JRS- 9,3 X 74 R - .30-06 Springfield.

Weight: Circa 2,8 Kgs ( 5,6 Lbs)

Boxlock round action made of Fortal 7075 alloy. New design of the scalloped receiver with deep-cut engravings on the breech. Mustache reinforcements underlining the barrels. New English style engravings, with a stag hunt scene on one side and a boar hunt scene on the other. Limited edition of 100 items, with its serial number stamped on the underside of the receiver, authenticity certificate. Pistol grip made of selected grade 3 chestnut and recoil pad.



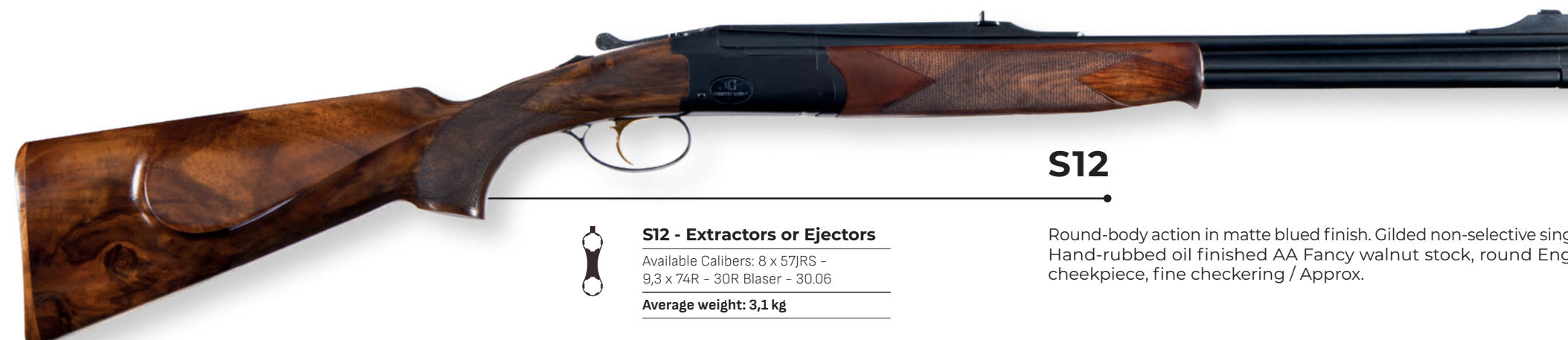
## C5 - C10 Light

**C5 Light Extractor C10 Light Ejector**

Available Calibers: 8 x 57JRS - 9,3 x 74R - 30.06

Average weight: 2,9 kg

Receiver manufacture from ultralight alloy material Fortal 7075. Game scenes engraved on both side of the receiver. Special heat treatment on all the metal parts with a grey finish. Pistol grip stock with English style cheek piece and rounded contour with AA fancy walnut on the Extractor version and AAA fancy on the Ejector. Oil finish with fine checkering.



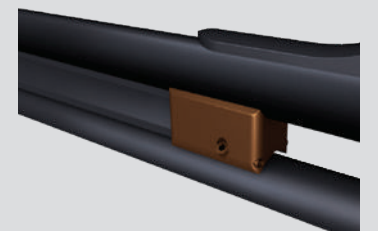
## S12

**S12 - Extractors or Ejectors**

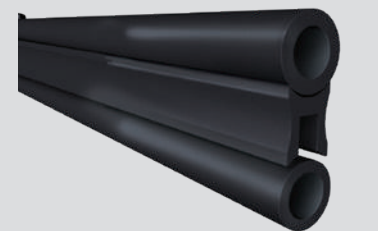
Available Calibers: 8 x 57JRS - 9,3 x 74R - 30R Blaser - 30.06

Average weight: 3,1 kg

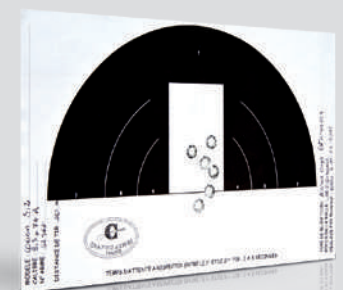
Round-body action in matte blued finish. Gilded non-selective single trigger. Hand-rubbed oil finished AA Fancy walnut stock, round English-style cheekpiece, fine checkering / Approx.



Adjustable regulating block.



Free-floating lower barrel.



Six fast shots from both barrels in 9,3 x 74 R calibre. Note the even repartition of impacts.



# Super Orion over & under Express rifles

Built on a new, subtly detailed and rounded-out, slim and low action, with new delicate wraparound full-coverage engraving, these are very light double

rifles - yet they possess an absolutely extraordinary balance and are acclaimed as the fastest rifles in their category.



## Classic Collection

WITH ROUND ACTION



### C5-C10



#### C5 Extractor - C10 Ejector

Available Calibers: 9,3 x 74R - 8 x 57JRS - 7 x 65R - optional calibres 30R Blaser - 300Win Mag 375H&H - 30.06

Average weight: 3,2 kg

New round body action based on our 20 Gauge frame. New deep-cut engraving wrapped around the receiver with a sophisticated decor in English scroll and bouquets plus new game scenes on action sides and bottom. Double trigger "Blitz" type battery. 55cm (22in) Barrels pre-machined for scope sight mounts. Luminescent rib rear sight and adjustable foresight. AAA fancy walnut rounded stock with English style cheek piece and similar forend on Ejector guns (2 stars walnut on the Extractor version). Comes in an CHAPUIS ARMES ABS molded case equipped with coded locks.



### C15 Serie 3



#### C15 Serie 3 - Ejector

New scalloped 28 ga. round action

Available Calibers: 9,3 x 74R - 8 x 57JRS - 30.30 Win

Average weight: 2,9 kg

New action, originally developed for 28 ga., with reduced height and width for faster handling. Rounded out design, with a smaller detonating and reduced firing pins spacing. New "Royal" style deep-cut engraving wrapping around the receiver, with new game scenes engraved on both sides and bottom of the action. New barrels profiles, 55 cm (22-in.) length. AAAAA Fancy walnut rounded stock with english-style cheekpiece, smaller forend. Comes in an CHAPUIS ARMES ABS molded case equipped with coded locks.



### C25 Serie 3



#### C25 Serie 3 - Ejector

New scalloped 28 ga. round action, fitted with sideplates

Available Calibers: 9,3 x 74R - 8 x 57JRS - 30.30 Win

Average weight: 2,9 kg

Same features as the Model C15 Série 3. Plus: Boxlock with sideplates. New engravings Holland & Holland « Royal » style, with hunting scenes on the sides and underside of the action. 4 stars grade walnut stock with pistol grip and English cheekpiece. Steel pistol grip cap hand-engraved. Checkered walnut butt plate. « Blitz » type lockwork with two triggers, short trigger guard. Gun case « Chapuis Armes » made in ABS synthetic material, with code operated locks.





# Side by side Express rifle with adjustable convergence of the barrels

In a conventional double rifle, barrel convergence can only be obtained by a complex soldering operation that requires highly skilled labour and mandates the use of only one load. With

very few exceptions, this means that going to another load requires re-regulation of the barrels, which implies returning the gun to the factory for intricate polishing and blueing.



## Classic Collection WITH ROUND ACTION



**X4**



### X4 - Extractors or Ejectors

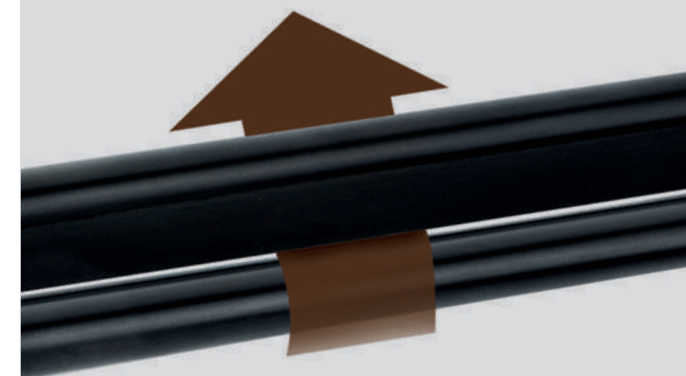
Available Calibers: 8 x 57JRS -  
9,3 x 74R - 30.06 - 30R Blaser -  
308 Win

Average weight: 3,1 kg

Scalloped receiver with mustaches reinforcements. New deep engraving with large scrolls for the ornamentals and wild boar or roebuck trophy engraved underneath the receiver. Pistol grip stock with English style cheekpiece in AA Fancy walnut. Hand-rubbed oil finish hand cut checkering.



Mechanical  
adjustment  
device.



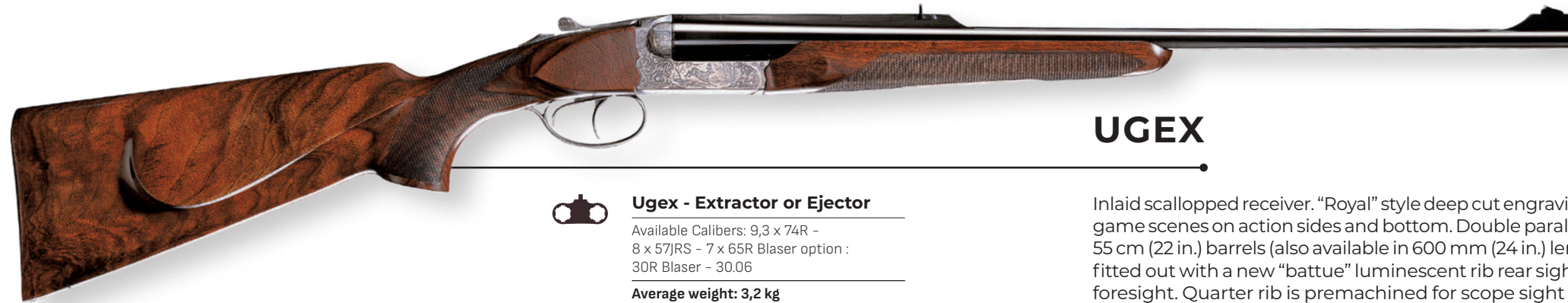
Free floating right  
barrel.



# Progress side-by-side Express rifles

We managed to keep the weight of these sleek double rifles under 3 kg and retained their exceptional accuracy, sensational balance and fast-handling

particulars. These are designed for quick response when driven big game is the order of the day.



## UGEX



### Ugex - Extractor or Ejector

Available Calibers: 9,3 x 74R -  
8 x 57JRS - 7 x 65R Blaser option :  
30R Blaser - 30.06

Average weight: 3,2 kg

Inlaid scalloped receiver. "Royal" style deep cut engraving the receiver, with game scenes on action sides and bottom. Double parallel underlugs on the 55 cm (22 in.) barrels (also available in 600 mm (24 in.) length), reshaped and fitted out with a new "battue" luminescent rib rear sight and an adjustable foresight. Quarter rib is premachined for scope sight mounts. AAA fancy grade walnut pistol grip stock with Englishstyle cheekpiece on ejector guns (AA fancy grade on extractor versions). Matching checkered walnut buttplate and forend. Hand-rubbed oil finish, hand cut checkering. Double-trigger "Blitz"-type battery. Comes in an ABS molded case equipped with coded locks.



## RGEX Serie 3



### Rgex Serie 3 - Ejector

New scalloped 28 ga. round action  
Available Calibers: 9,3 x 74R -  
8 x 57JRS

Average weight: 3 kg

New, round profile narrow (28 ga.) Serie 3 receiver. The barrels are set closer to each other and the detonating has been reshaped and refined. New "Royal" style deep cut engraving wrapped around the receiver, with new game scenes on action sides and bottom. Double parallel underlugs on the 55 cm (22 in.) barrels, reshaped and fitted out with a new "battue" rib sight and a streamlined foresight. AAAA grade walnut pistol grip stock with English-style round cheekpiece and engraved steel grip cap. Matching walnut buttplate and forend with a fully inlaid smaller lever lock. Hand-rubbed oil finish, hand cut checkering. Double-trigger "Blitz"-type battery, short trigger guard. Comes in an ABS molded case equipped with coded locks.



## REX Serie 3



### Rex Serie 3 - Ejector

New scalloped 28 ga. round action,  
fitted with sideplates  
Available Calibers: 9,3 x 74R -  
8 x 57JRS

Average weight: 3 kg

Identical construction to RGEX Serie 3, however with sideplates. New deep-cut "Royal" style engraving wrapping around the receiver, with new game scenes on sideplates, receiver sides and bottom. AAAA grade walnut pistol grip stock with English-style round cheekpiece and engraved steel grip cap. Matching walnut buttplate and forend with a fully inlaid smaller lever lock. Hand-rubbed oil finish, hand cut checkering. Double-trigger "Blitz"-type battery, short trigger guard. Comes in an ABS molded case equipped with coded locks.

Classic Collection  
WITH ROUND ACTION





# Super Orion Over & under light weight shotgun

The technical design of our Super Orion receiver which is one of the lowest in the market has an interchangeable recoil plate located just underneath the barrel that confer to our Shotgun an exceptional strength. As our over & under is one of strongest shotgun we present today the C30-C35 Light, a lightweight version of our iconic Super Orion.

The choice of rough material is always a critical step in the manufacturing process of hunting weapons, we conducted extensive research with our metallurgist's partners to offer what's now the best in terms of Ultralight alloy.



## Classic Collection WITH ROUND ACTION



**NEW** **C60** Light Woodcock  
with extractors



### **C60 Light Woodcock.**

Calibers: 12 gauge magnum or  
20 gauge magnum.

Weight: Circa 2,5 Kgs (5 Lbs)

New round-shaped receiver. Mustache reinforcements underlining the barrels. New exclusive English style deep cut engravings with new hunting scenes: Woodcocks on both side plates. Pistol grip made of selected grade 2 walnut and tulip-shaped fore-end. Barrel length: 600 mm (24 inches) with short top rib, no side ribs.



**C30 - C35** Light



### **C 30 light Extractor C 35 light ejector.**

Calibers: 12 gauge magnum  
or 20 gauge magnum

Weight: Circa 2,7 kgs (6 Lbs)

Receiver made of Fortal 7075 alloy. English or pistol grip stock. Grade 2 walnut for the C 30 model. Grade 3 walnut for the C 35. New English style engravings with scrolls and roses wholly covering the action.





# Super Orion over & under shotguns

The robust Super Orion action has been redesigned to achieve a round profile, yet remains shallow and light. A new english-style scrollwork engraving is applied to the entire receiver for a timeless refined

appearance, turning the Super Orion Round Design into one of the few guns of reference in the highly disputed over-and-under fine gun category.

C30 - C35 - C40 - C60 - C65	Fixed chokes barrels superior proof for steel shot			Fixed chokes barrels superior proof for lead shot (Manufacture upon request)	Interchangeable chokes barrels, superior proof for steel shot
UPLAND TYPE Barrel lenght 700mm - 760mm as an Option	1/4 & 1/2	Lisse & 1/2	Rifled & 1/2	1/4 & 3/4	Delivered with 5 chokes tubes & wrench
Cal. 12 or 20 - 76 mm chamber	.	on request		.	optional
Cal. 16 - 70 mm chamber	.	on request		.	
WOODCOCK TYPE Barrel lenght 600 mm					
Cal. 12 or 20 - 76 mm chamber		.	optional		optional
Cal. 16 - 70 mm chamber					
FIELD TYPE Barrel lenght 660 mm					
Cal. 12 or 20 - 76 mm chamber	.	on request	optional		optional



C30 - C35 woodcock RD



The Super Orion C30 is an extractor shotgun, while the C35 model is fitted with ejectors. The action offers a round body and features interchangeable recoil plates. Barrel length depends on the version and can be 700 mm (27 1/2 in.), 660 mm (26 in.) or 600 mm (24 in.). New fine english scroll engraving wrapped around the receiver, with new game scenes on action sides and bottom.

Double-trigger “Blitz” type battery with short triggerplate. AAA fancy grade walnut straight grip stock slightly and elegantly rounded out,with English-style round cheekpiece on ejector guns (AA fancy grade on extractor versions). Hand-rubbed oil finish, hand cut checkering. Comes in a molded plastic case with codedlocks.



C40 upland RD



Technically identical to the Super Orion Round Design C35 model, however fitted with sideplates. New fine english scroll engraving wrapped around the receiver, with new game scenes on action sideplates and bottom. Double-trigger “Blitz” type battery with short trigger plate. AAAA fancy grade walnut straight grip stock

slightly and elegantly rounded out, matching checkered walnut buttplate. Hand-rubbed oil finish, hand cut checkering. Double-trigger “Blitz” type battery with short trigger plate. Comes in a molded plastic case with coded locks.



C60 - C65 woodcock RD



Model C60 is an extractor gun, while Model C65 is fitted with automatic ejectors. These guns are technically identical to Model C35. The “Woodcock” version offers 600 mm (23.6 in.) barrels, fowling-type sighting rib, no intermediate band between barrels. New engraving design with english-style bouquets and flying woodcocks on actions

sides and bottom. Straight stock in AA Fancy walnut for C60 or AAA Fancy for C65, Pistol grip stocks optional. Double trigger Blitz-type battery, short trigger bow. Delivered in a Chapuis Armes molded ABS fitted case with code locks.



# Progress side by side shotguns

The new action of the Progress Round Design creates guns with the light, fluid lines one only associated before to the finest English or Belgian bespoke smoothbores.

## UGP - RGP - RP

### UPLAND TYPE

Barrel lenght 700 mm

760mm as an option

Cal. 12 or 20 - 76 mm chamber

Cal. 16 - 70 mm chamber

### WOODCOCK TYPE

Barrel lenght 600 mm

Cal. 12 or 20 - 76 mm chamber

Cal. 16 - 70 mm chamber

### FIELD TYPE

Barrel lenght 660 mm

Barrel lenght 660 mm

Fixed chokes barrels  
superior proof for steel shot

1/4 & 1/2

Lisse & 1/2

Rifled  
& 1/2

Fixed chokes barrels  
superior proof for lead  
shot (Manufacture upon  
request)

1/4 & 3/4

Interchangeable chokes  
barrels, superior proof for  
steel shot

Delivered with 5 chokes  
tubes & wrench

optional

optional

optional

## Classic Collection

WITH ROUND ACTION



## UGP-RGP Round Design

UGP guns are fitted with extractors while RGP models feature ejectors. New rounded out action and detonating. Barrels with double parallel locking lugs and plunging center rib, special wingshooting rib optional. New fine English scroll engraving wrapping around the receiver with new game scenes on action sides and bottom. Straight English-style traditional stock with a subtle rounded out touch in AA Fancy (UGP version) or AAA Fancy (RGP version) select walnut, splinter-type forend with flush lock. Hand-rubbed oil finish, hand checkering. Double trigger "Blitz"-type battery and short trigger guard plate. Comes in a fitted molded plastic case with coded locks.



## RP Round Design

Identical to the RGP Ejector Round Design model, however fitted with side plates. New engraving pattern in fine English scroll wrapping around the action, new game scenes on the sideplates and action bottom. Pistol grip stock with English-style cheekpiece carved out of AAAA Fancy walnut, buttplate in matching checkered walnut. Double trigger "Blitz"-type battery and short trigger guard plate.



# .410 Gauge Over & under Super Orion

The expertise and excellence of Master Gun Makers has allowed us to engineer a totally new receiver exclusively meant for the .410 caliber cartridge. Very much sought after by hunters praising difficult

shots, this superb small "Super Orion" with its exclusive design, unique technical features, will please the most demanding among you.



## Classic Collection

WITH ROUND ACTION



NEW

### C.410 ga **C35** with Ejectors

New receiver "Super Orion" with particular space between the firing pins, specially designed for the .410 cartridge. Made of machined 42CD4 steel with a new design, Boss style, and polished receiver walls. New engravings, with broad scrolls on the sides and a soaring woodcock engraved in a medallion on the underside of the receiver. Barrel length: 710 mm (28 inches) with ventilated top rib. Pistol grip and tulip-shaped fore-end tip, grade 3 walnut. Fixed chokes only.

Average weight 2.6Kg (6 Lbs)





# 28 Gauge Super Orion shotguns and Progress side by side

The renewed interest of dedicated hunters and shotgunners in the 28 ga. quickly translated in many guns being launched on the market. Many of these are not true 28 ga. designs and are heavier than needed to fire this small but very efficient cartridge. At Chapuis Armes, we worked up from the cartridge dimensions and paid special attention to conserving the balance, light weight and liveliness

of our Super Orion smoothbores, painstakingly shaping the entirely new round body action and the detonating. The best shotgunners around the world have already told us that the exquisite lines of this new shotgun, along with its tried and proven mechanical reliability, place it very high indeed in this emerging category.



## Classic Collection WITH ROUND ACTION



### 28 ga. **C35** Round Design



#### 28 ga. C35 RD - Ejector

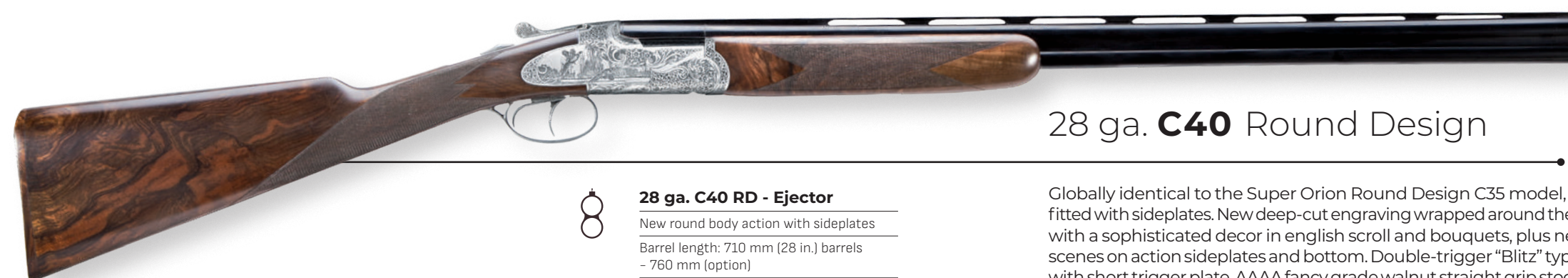
New round body action, scalloped for perfect fit

Barrel length: 710 mm (28 in.) barrels - 760 mm (option)

Fixed chokes standard, interchangeable choke tubes

Average weight: 2,5 kg

All-new round body action featuring a reduced distance (20 mm) between firing pins, fitted with interchangeable recoil plates. Barrel length is 710 mm (28 in.). New deep-cut engraving wrapped around the receiver, with a sophisticated decor in english scroll and bouquets, plus new game scenes on action sides and bottom. Double-trigger "Blitz" type battery with short trigger plate. AAA fancy grade walnut straight grip stock slightly and elegantly rounded out. Hand-rubbed oil finish, hand cut checkering. Comes in a molded plastic case with coded locks.



### 28 ga. **C40** Round Design



#### 28 ga. C40 RD - Ejector

New round body action with sideplates

Barrel length: 710 mm (28 in.) barrels - 760 mm (option)

Fixed chokes standard, interchangeable choke tubes optional

Average weight: 2,5 kg

Globally identical to the Super Orion Round Design C35 model, however fitted with sideplates. New deep-cut engraving wrapped around the receiver, with a sophisticated decor in english scroll and bouquets, plus new game scene on action sideplates and bottom. Double-trigger "Blitz" type battery with short trigger plate. AAAA fancy grade walnut straight grip stock slightly and elegantly rounded out, matching checkered walnut buttplate. Hand-rubbed oil finish, hand cut checkering. Double-trigger "Blitz" type battery with short trigger plate. Comes in a molded plastic case with coded locks.



### 28 ga. **RGP**



#### 28 ga. RGP - Ejector

New round body action, scalloped for perfect fit

Barrel length: 710 mm (28 in.) - 760 mm (option)

Fixed chokes (interchangeable choke tubes optional)

Average weight: 2,450 kg

New Progress receiver with a firing distance reduce to 20 mm. New rounded shape of the action. Deep cut engraving wrapped around the receiver with a sophisticated decor in English scrolls and bouquets plus new game scene on action sides and bottom. 71 mm barrel length with straight rib and fixed chokes. Interchangeable chokes Optional. Straight grip stock with AAA fancy walnut. Hand rubbed oil finish with hand checkering. Comes in a fitted molded plastic case with combination locks.





# Artisan Collection

WITH ROUND ACTION

The assembling of a shotgun and a rifle require expertise. If the fitting and adjusting process is almost the same on a shotgun versus an express rifle, the technics varies. The craftsmanship ended up with unique firearms made under customers requests fitted for every single client.



# Super Orion over & under shotgun

Whether you are looking for a finely balanced upland gun or a lightning-fast woodcock shotgun, the new Super Orion Round Design is worth a second look. You may now select a traditional scalloped receiver or an elegant sideplate gun. Both have been painstakingly detailed by hand by our Master Gunsmiths, from the round body to the new detonating. Both come with hand-cut

engraving signed by one of our Master Engravers, in a tapestry wraparound fashion. Bottomless blueing on the barrels enhances the quality of the luxury, hand-picked walnut. These are beautiful, very robust indeed shotguns, in a timeless french style. Fast handling, self pointing for impressive game bags, they run the gamut, from driven pheasant missiles to fast raising upland birds - in complete elegance.



## Artisan Collection

WITH ROUND ACTION



### C135 Artisan - Ejector

Upland or Woodcock type

New action, round body receiver, scalloped for better wood-to-metal fit

Gauges: 12 / 16 / 20 / 28

Barrel length: 600 mm (24 in.) - 660 mm (26 in.) - 700 mm (27 1/2 in.) - 760 mm (option)

Fixed chokes (interchangeable choke tubes optional)

**Weight: 2,6 kg to 2,9 kg depending on gauge and barrel length**

### C135 Artisan Ejector

Hand-contoured round action scalloped for a better wood-to-metal fit and new, hand-sculpted detonating. Hand engraved by one of our Master Engravers; signed, deep-cut foliage accents with fine game scenes, wraparound engraving on both action sides and action bottom. Double trigger "Blitz"-type battery. Straight english-style stock with elongated trigger plate, bordered trigger bow, AAAAA luxury select walnut, checkered walnut buttplate (pistol grip stock optional). Hand-rubbed oil finish, hand-cut "gunpowder" checkering wrapping around the entire grip area. Comes in a New Prestige Chapuis Armes gun case.



### C140 Artisan - Ejector

Upland or Woodcock type

New action, round body receiver, fitted with sideplates

Gauges: 12 / 16 / 20 / 28

Barrel length: 600 mm (24 in.) - 660 mm (26 in.) - 700 mm (27 1/2 in.) - 760 mm (option)

Fixed chokes (interchangeable choke tubes optional)

**Weight: 2,6 kg to 2,9 kg depending on gauge and barrel length**

### C140 artisan Ejector

Generally identical to the C135 Super Orion, however fitted with sideplates. New, hand-sculpted detonating. Hand engraved by one of our Master Engravers, signed deep-cut foliage accents with fine game scenes, wraparound engraving on both action sides and action bottom. Double trigger "Blitz"-type battery. Straight english-style stock with elongated trigger plate, bordered trigger bow, AAAAA luxury select walnut, checkered walnut buttplate (pistol grip stock optional). Handrubbed oil finish, hand-cut "gunpowder" checkering wrapping around the entire grip area. Comes in a New Prestige Chapuis Armes gun case.



# Progress side-by-side shotguns

This elegant, lightweight and fast-handling shotgun was only missing a smaller round-body action and a new rounded-out detonating to reach excellence. The receiver is fully hand engraved in a continuous tapestry that frames and enhances delicate new game scenes created by our most gifted Master

Engravers. The overall lines are intemporal and reintroduce the true French styling so many connoisseurs were missing. Exceptional walnut is used for stocking, comforting the most exigent hunters who are looking for a very nice gun that will last many seasons.



## RGP Artisan ejector

Hand-contoured round action and detonating. Hand engraved by one of our Master Engravers; signed, deep-cut wraparound engraving framing game scenes on both action sides and action bottom. Double parallel underlugs. Double trigger "Blitz"-type battery. Straight english-style stock with elongated trigger plate, bordered trigger bow, AAAAA luxury select walnut, checkered walnut buttplate (pistol grip stock optional). Handrubbed oil finish, hand-cut "gunpowder" checkering wrapping around the entire grip area. Comes in a New Prestige Chapuis Armes gun case.



### Progress RGP Artisan - Ejector

Round action  
Gauges available: 12 / 16 / 20 (3-in. chambers)  
Barrel length: 600 mm (24 in.) - 660 mm (26 in.) - 700 mm (27 1/2 in.) - 760 mm (option)  
Fixed chokes (interchangeable choke tubes optional)  
Weight: 2,7 kg to 2,9 kg depending on gauge and barrel length



## RP Artisan ejector

Technically identical to the RGP model outlined above, however fitted with sideplates. Hand-contoured round action and detonating. Hand engraved by one of our Master Engravers; signed, deep-cut wraparound engraving framing game scenes on action sideplates and action bottom. Double parallel underlugs. Double trigger "Blitz"-type battery. Straight english-style stock with elongated trigger plate, bordered trigger bow, AAAAA luxury select walnut, checkered walnut buttplate (pistol grip stock optional). Hand-rubbed oil finish, hand-cut "gunpowder" checkering wrapping around the entire grip area. Comes in a New Prestige Chapuis Armes gun case.



### Progress RP Artisan - Ejector

Round action, fitted with sideplates  
Gauges available: 12 / 16 / 20 (3-in. chambers)  
Barrel length: 600 mm (24 in.) - 660 mm (26 in.) - 700 mm (27 1/2 in.) - 760 mm (option)  
Fixed chokes (interchangeable choke tubes optional)  
Weight: 2,7 to 2,9 kg depending on gauge and barrel length





# Progress Serie 3 Express Rifle

Now available with the new Progress Serie 3 action, the Artisan version of these side-by-side rifles present incredibly fast handling, making them ideal for driven game hunts. The round-body receivers enhance the sumptuous walnuts we select for their high contrast and delicate figure. We travel to remote areas in the Caucase where we select standing trees that we insist are prepared, dug

out, not felled. Blanks are then cut and transported to our plant where they mature for several years under carefully controlled conditions of humidity and temperature in the dark. Then only are they finally selected, rough machined and painstakingly hand-fitted to the guns in the Artisan Collection before receiving their deep hand-rubbed finish.



## Artisan Collection

WITH ROUND ACTION



### RGEX Artisan Serie 3 - Ejector

New 28 ga. sized round body action, scalloped for tighter wood-to-metal fit

All barrels 550 mm (22 in.) in length

Available Calibers: 9,3 x 74R - 8 x 57JRS

Average weight: 3 kg

### RGEX Artisan Serie 3

New round profile narrow (28 ga.) Serie 3 receiver. The barrels and firing pins are set closer to each other and the detonating has been reshaped and refined. Barrels with double parallel underlugs, new barrel contour, 550 mm (22 in.) length, fitted out with a new "battue" rib, luminescent rear sight and a streamlined foresight. Fully handengraved in deep-cut designs wrapping around the receiver, with "al bulino" game scenes on bottom of the action, signed by a Master Engraver. Double-trigger "Blitz"-type battery. Pistol grip stock with german cheekpiece carved out of AAAAA luxury walnut hand fitted with skeletonised, engraved steel buttplate, walnut spacer. Handrubbed oil finish, hand-cut "gunpowder" checkering wrapping around the entire pistol grip. Comes in a New Prestige Chapuis Armes gun case.



Skeleton butt plate detail



### REX Artisan Serie 3 - Ejector

New 28 ga. sized round body action, fitted with sideplates

All barrels 550 mm (22 in.) in length

Available Calibers: 9,3 x 74R - 8 x 57JRS

Average weight: 3 kg

### REX Artisan Serie 3

Generally identical to the RGEX model, round action body, however fitted with side plates. Fully hand-engraved in deep-cut designs wrapping around the receiver, with "al bulino" game scenes on the sideplates and action bottom, signed by a Master Engraver. Doubletrigger "Blitz"-type battery with engraved, long trigger bow plate. Pistol grip stock with german cheekpiece carved out of AAAAA luxury walnut hand fitted with skeletonised, engraved steel buttplate, walnut spacer. Hand-rubbed oil finish, hand-cut "gunpowder" checkering wrapping around the entire pistol grip. Comes in a New Prestige Chapuis Armes gun case.



# Super Orion Serie 3 Express rifle

The light weight and fast handling properties of the new Super Orion Serie 3 rifles in the Classic Collection have been carefully kept and are enhanced by a beautiful detailing, hand-carved into the action by the Chapuis Armes master gunsmiths. Deep-cut

foliage engraving frames delicate game scenes finely drawn "al bulino". The contained weight, incredible balance of the Super Orion Serie 3 rifles result in fast, more often decisive shooting when driven big game bursts out of the woods.



## C115 Artisan Serie 3



### C115 Artisan Serie 3 - Ejector

New 28 ga.-sized round body action, scalloped for perfect wood-to-metal fit

Available Calibers: 9,3 x 74R - 8 x 57JRS - 30.30 Win

Average weight: 3 kg

All-new hand-rounded action body featuring a reduced distance (20 mm) between firing pins, fitted with interchangeable recoil plates. Hand-sculpted detonating, with prolonged side ribs outlining the receiver. New hand-chased, signed by a Master Engraver, deepcut engraving wrapped around the receiver, in a sophisticated foliage decor with new "al bulino" game scenes on action sides and bottom. Double-trigger "Blitz" type battery. AAAAA luxury grade walnut straight grip stock slightly and elegantly rounded out for the smoothbore version, pistol grip stock with german cheekpiece for the express rifle. Hand-rubbed oil finish, hand cut checkering. Skeletonised, engraved steel butt plate and pistol grip cap, matching walnut spacer.



## C125 Artisan Serie 3

Generally identical to the C115 Artisan model, round action body, however fitted with side plates. Fully hand-engraved in deep-cut designs wrapping around the receiver, with "al bulino" game scenes on the sideplates and action bottom, signed by a Master Engraver. Doubletrigger "Blitz"-type battery with engraved, long trigger bow plate. Pistol grip stock with german cheekpiece carved out of AAAAA luxury walnut hand fitted with skeletonised, engraved steel butt plate and grip cap, matching walnut spacer. Hand-rubbed oil finish, hand-cut "gunpowder" checkering wrapping around the entire pistol grip. Comes in a New Prestige Chapuis Armes gun case.

### C125 Artisan Serie 3 - Ejector

New 28 ga.-sized round body action, fitted with sideplates

Available Calibers: 9,3 x 74R - 8 x 57JRS - 30.30 Win

Average weight: 3 kg





# Grand Luxe Collection

A limited numbers of guns from this category are manufacture every year. These exclusive firearms represent the unique expertise of our best gunsmiths all members from our Custom shop team. Every single gun is signed by engravers which are among the most prestigious worldwide signature. These unique firearms are only manufacture to customer specifications.





# Super Orion over & under shotguns and Progress side-by-side shotguns

Here we are getting closer and closer to undisputable excellence, where either mechanical features or aesthetics achievements are concerned. Our most experienced Master Gunsmiths chisel and polish by hand the rough action until they achieve

a flawless appearance. Our naturally shallow, slim receiver cannot be compared to any other action. It procures large, well-defined areas for our Master Engravers to deploy their skill and talent.



## Grand Luxe collection



### Royal



#### Royal - Ejector

Gauges available: 12 / 16 / 20 ga. / 28

Barrel length: 600 mm (24 in.) - 660 mm (26 in.) - 700 mm (27 1/2 in.) - 760 mm (option)

Fixed chokes (interchangeable choke tubes optional)

Weight: 2,7 to 2,9 kg depending on gauge and barrel length

High-strength all-steel action fitted with side plates, hand-cut detailing and accents, palms and cordons, double-scalloped for a firm wood-to-metal fit. Double trigger "Blitz"-type battery. New English-style fine scroll hand-engraved motif, with a "al bulino" delicate game scenes on action sides and bottom, signed by a Master Engraver. Double parallel locking underlugs, "Blitz" double trigger battery, luxury AAAAAA walnut straight stock a checkered rosewood butt plate, hand-rubbed oil finish, flush engraved locking lever in forend. Extended trigger plate with bordered, engraved trigger bow. Comes in a New Prestige Chapuis Armes gun case.



### C240



#### C240 - Ejector

Gauges available: 12 / 16 / 20 (3-in. chambers) ga / 28

Barrel length: 600 mm (24 in.) - 660 mm (26 in.) - 700 mm (27 1/2 in.) - 760 mm (option)

Fixed chokes (interchangeable choke tubes optional)

Weight: 2,7 kg to 2,9 kg depending on gauge and barrel length

High-strength all-steel action fitted with side plates, hand-chiseled detailing and accents, palms and sculpted detonating, double-scalloped for a firm wood-to-metal fit, equipped with an interchangeable recoil plate. Double trigger "Blitz"-type battery. New English style fine scroll hand-engraved motif, with "al bulino" delicate game scenes on action sides and bottom, signed by a Master Engraver. Luxury AAAAAA walnut straight stock a hand-checkered rosewood butt plate, hand-rubbed oil finish, flush engraved locking lever in forend. Extended trigger plate with bordered, engraved trigger bow. Comes in a New Prestige Chapuis Armes gun case.





# Progress Express rifles and Super Orion Express rifles

There is no alternative to individual workmanship when quality is the goal. Highly experienced Master Gunsmiths accomplish many operations by hand, fashioning actions, contouring receivers and detonating, polishing the rough metal and bare walnut, cutting exquisite checkering. Then they hand over the essential parts to engravers who will in turn

make them unique. Deep-cut floral or foliage motifs underline exquisite bouquets and refined "al bulino" game scenes, carrying on the external spirit of the hunt and the hunter. The rarest walnut blanks, matured to perfection, hand finished in linseed oils, are checkered by hand. This is flawless gunmaking at its best.



CHAPUIS ARMES  
FRANCE

## Grand Luxe collection



### HGEX Imperial - Ejector

Available Calibers: 9,3 x 74R -  
8 x 57JRS - 7 x 65R - 30R Blaser -  
30.06

Average weight: 3,3 kg

## Impérial

Hand-contoured and detailed action fitted with sideplates, palms and round detonating. Double parallel locking underlugs, "Blitz" type double-trigger battery. 600 mm (24 in.) barrels (550 mm/22 in. on request) with a quarter rib rear sight base prepared for scope sight installation. Illuminated rear sight, adjustable foresight. Flush engraved forend locking lever. Pistol grip stock with undercut german cheekpiece in luxury AAAAAA walnut, hand-rubbed oil finish, elongated trigger plate with raised border engraved trigger bow, engraved steel pistol grip cap. Hand-checked rosewood butt plate. Comes in a New Prestige Chapuis Armes gun case.



### Prestige - Ejector

Available Calibers: 9,3 x 74R -  
8 x 57JRS - 7 x 65R - 30R Blaser -  
300 Win - 30.06

Average weight: 3,2 kg

## Prestige

Hand-detailed action fitted with side plates and interchangeable recoil plates receiver, scalloped for a perfect wood-to-metal fit, with palms and exclusive detonating detailing. Deep-cut hand engraving with "al bulino" hand engraved game scenes on action sides and bottom, signed by a Master Engraver. "Blitz" type double-trigger battery. 550 mm (22 in.) barrels with a quarter rib rear sight base prepared for scope sight installation. Illuminated rear sight, adjustable foresight. Flush engraved forend locking lever. Pistol grip stock with undercut german cheekpiece carved out of collector-grade walnut, hand-rubbed oil finish, elongated trigger plate with raised border engraved trigger bow, engraved steel pistol grip cap. Hand checked rosewood butt plate. Comes in a New Prestige Chapuis Armes gun case.





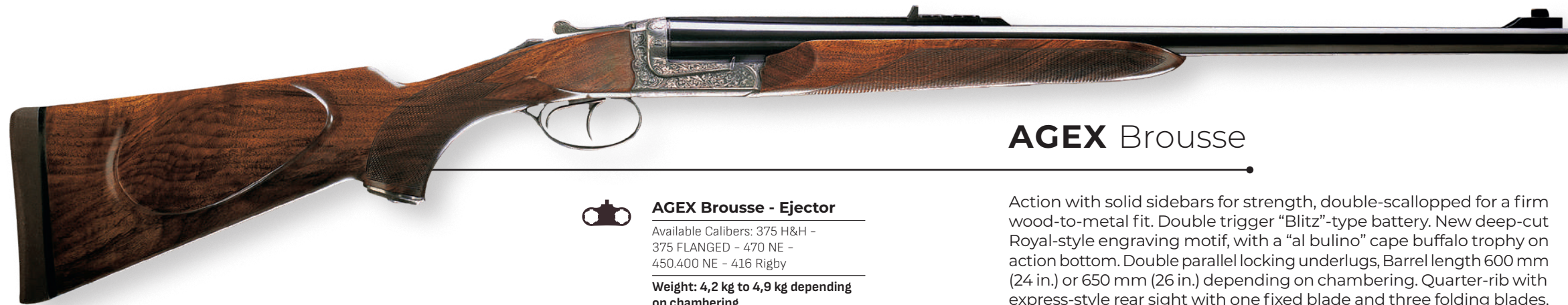
# African Express rifles

Especially developed from our double parallel locking underlugs Progress action, this rifle has been dimensioned to accept the most powerful African

cartridges. Many trophy hunters and guides have adopted it all over Europe and America, making it one of the best-sellers in this category.



CHAPUIS ARMES  
FRANCE



## AGEX Brousse



### AGEX Brousse - Ejector

Available Calibers: 375 H&H -  
375 FLANGED - 470 NE -  
450.400 NE - 416 Rigby

Weight: 4,2 kg to 4,9 kg depending  
on chambering

Action with solid sidebars for strength, double-scalloped for a firm wood-to-metal fit. Double trigger "Blitz"-type battery. New deep-cut Royal-style engraving motif, with a "al bulino" cape buffalo trophy on action bottom. Double parallel locking underlugs, Barrel length 600 mm (24 in.) or 650 mm (26 in.) depending on chambering. Quarter-rib with express-style rear sight with one fixed blade and three folding blades, prepared for scope bases installation. AAA Fancy walnut pistol grip stock with an english-style cheekpiece and an old english buttpad, hand-rubbed oil finish. Extended trigger plate with bordered, engraved trigger bow, reservoir engraved steel pistol grip cap. Comes in a molded plastic case.



## AGEX Jungle



### AGEX Jungle - Ejector

Available Calibers: 375 H&H -  
375 FLANGED - 470 NE -  
450.400 NE - 416 Rigby

Weight: 4,2 to 4,9 kg depending  
on chambering

Largely similar to the AGEX Brousse model, it has been improved by fitting sideplates and adding heavy reinforcing sidebars. New engraving throughout, signed by our Master Engraver, with royal-style deep cut foliage and chain motifs outlining the sideplates. "Al bulino" game scenes engraved on sideplates: buffaloes and elephants, with a lion's head medaillon on action bottom. AAAAA luxury walnut pistol grip stock with an english-style cheekpiece and an old english buttpad. Extended trigger plate with bordered, engraved trigger bow, reservoir engraved steel pistol grip cap. Comes in a New Prestige Chapuis Armes gun case.





## Master engraver expertise

These engravings have been craft by our best Master engravers where some of them are among the best in Europe like Incisionni Dassa workshop located in Gardone Italy which have been collaborating on our custom guns for several decades. Various techniques and engraving tools are used to perform this extraordinary quality and hundreds of hours are needed on every single work to get to this level where perfection is needed.

Down load our web pages to read more about hand engraving

MORE ABOUT ENGRAVING



chapis-armes.com

## All the **steps** of an hand made engraving



Drawing is the first step



Using layer to match drawing outline with receiver



Several technics can be used to make the engraving alive



## The various engraving Technics

At Chapuis Armes, we well know that fashions fade out, while elegance and good taste are eternal. Our engravers work relentlessly and methodically to perpetuate this art which our ancestors have passed on to us with passion.

We thus make of each arm of our "Artisanale" or "Grand luxe" range, a unique production. It shows by the quality of the metalwork, wood to metal fit, precision of the details found on these beautiful engravings showing hunting scenes, forever on the steel of your receiver.







**Postal address**

Z.I. La Gravoux  
42380 Saint-Bonnet-le-Château

**Tél. :** (33) 04 77 50 06 96

**Fax :** (33) 04 77 50 10 70

**E-mail**

info@chapuis-armes.com

**Follow us on social**



[www.chapuis-armes.com](http://www.chapuis-armes.com)